



product description

24", 1000Nits, PCT, Intel Core i5-4570TE, DDR3 SODIMM/4GB, SSD/64GB, RJ45*2, USB-3*2, USB-2*4, COM*2, DVI*1, VGA*1, Audio Jack*2(Mic-in,Line-out), PS2*1(KB&Mouse), AOT, WP, AC100~240V input

Introduction

Features:

- 1000 nits Sunlight Readable LCD
- Long Life, Low Power Consumption LED Backlight
- Advanced Optical Bonding (AOT)
- High Shock & Vibration Resistance
- PCT Multi-Touch Support
- IP65 Fascial Waterproof

Application:

- Marine
- Outdoor Display



Specifications

Preliminary

Model Number	NPS2425
LCD Display	
Backlight	24" Wide TFT LCD, LED Backlight 1000 nits, FHD
Active Display Area	535(H) x 303(V)mm
Brightness	1,000 cd/m ²
Resolution	1920 x 1080 (FHD)
Contrast Ratio	3000 : 1
Touch Screen	PCT Multi-Touch
Optical	AOT
System	
Processor	Intel Core i5
Chip Set	Intel H81 Express Chipset
Memory	DDR III SODIMM 4GB
Ethernet	Realtek 8111F PCIe Gigabit LAN
Storage	SATA 2.5" HDD (Optional)
I/O Port	RJ45*2,USB-3*2,USB-2*4,COM*2,DVI*1,VGA*1, Audio Jack*2(Mic-in,Line-out),PS2*1(KB&Mouse),Power AC-in x1
BIOS	AMI
Wake on LAN	Yes
Watchdog Timer	1~255 steps programmable
H/W Status Monitor	Support power supply voltages, fan speed and temperature monitoring
Expansion Interface	Mini PCIe (internal)
Power	
Voltage	AC Input: AC 100 ~ 240V ; DC Input (Optional)
Power consumption	TBD
Mechanical	
IP Rating	Fascial waterproof to IP65 standards when console mounted.
Construction	Aluminum Alloy Chassis
Mounting	Panel (Flush) Mount , VESA75/VESA100, Stand Mount
Dimension	600.9mm (W) x 427.4mm(H) x 90.2mm(D)
Net Weight	8.4Kg
Environmental	
Operating Temperature	0°C~50°C
Storage Temperature	-20°C ~ 60°C
Operating Humidity	5~95% @ 40°C, non-condensing
Certification	Designed to meet CE/FCC

Specifications are subject to change without notice.

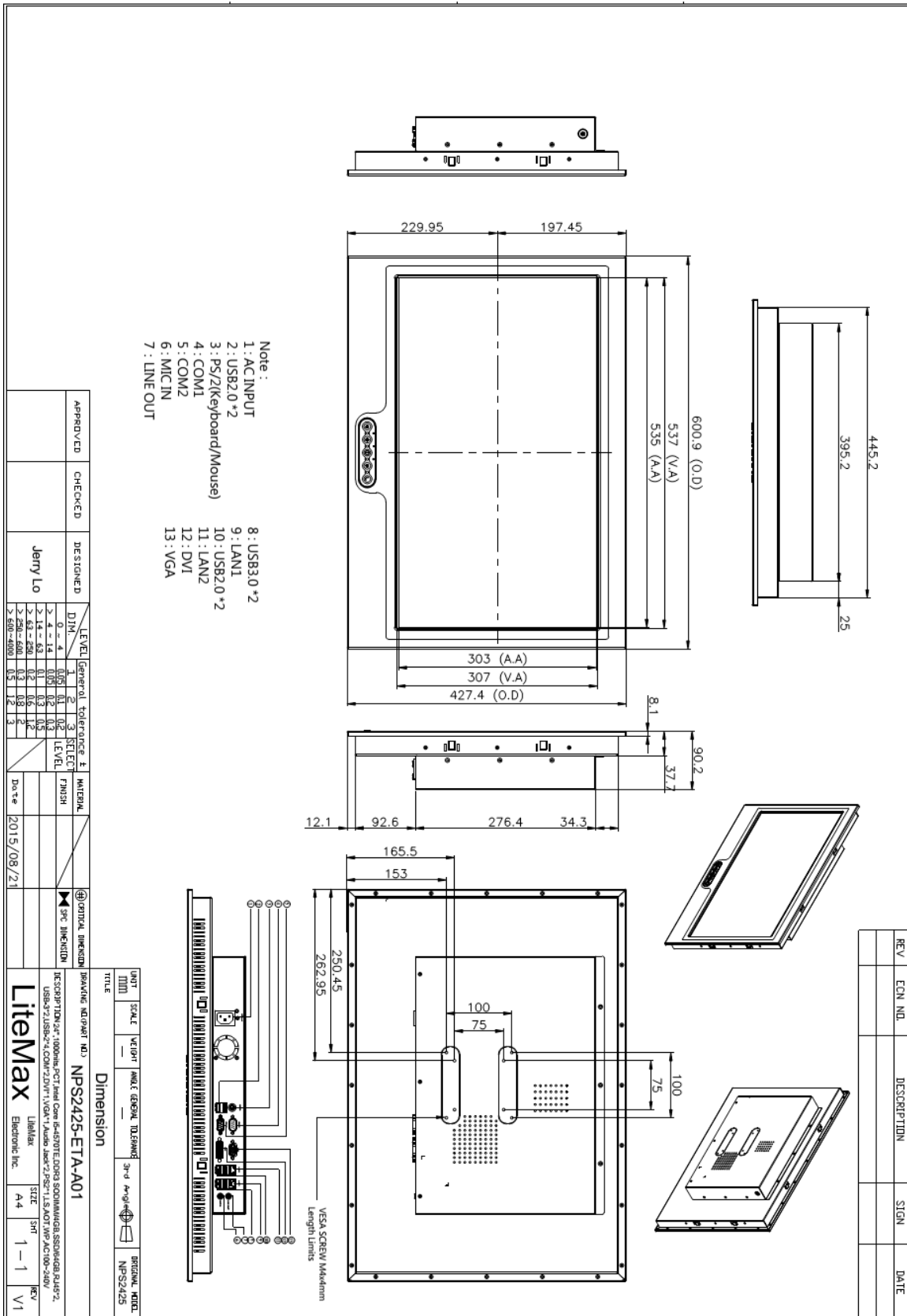
All brands or product names are trademarks or registered trademarks of their respective companies.



Mechanical Drawing

Outline Dimensions

Unit : mm





Ordering Information

Part Number	Description
NPS2425-ETA-A01	24",1000nits,PCT.Intel Core i5-4570TE.DDR3 SODIMM/4GB,SSD/64GB.RJ45*2,USB-3*2,USB-2*4.COM*1,VGA*1,DVI*1,Audio Jack*2.PS2*1,LS,AOT,WP,AC100~240V

Optional Accessories

Part Number	Description
321038156800	Print,Label,Serial,NPS,1568.V0.Microsoft Windows 7.Professional for Embedded.Systems,42C-00022,P
810618301010	CABLE.POWER.AC.1830mm USA type
810618301090	CABLE,POWER,AC,1830mm Europe type
810618301050	CABLE.POWER.AC.1830mm UK type
810618301170	CABLE.POWER,AC,1830mm Australia type
810618301031	CABLE.POWER.AC.1830mm Japan type