



**product description**

21.5", 1600Nits, PCT, Intel Core i5-4570TE, DDR3 SODIMM/4GB, SSD/64GB, RJ45\*2, USB-3\*2, USB-2\*4, COM\*2, DVI\*1, VGA\*1, Audio Jack\*2(Mic-in,Line-out), PS2\*1(KB&Mouse), AOT, WP, AC100~240V input

**Introduction**

**Features:**

- 1600 nits Sunlight Readable LCD
- Long Life, Low Power Consumption LED Backlight
- 0°C~50°C Wide Operating Temperature
- Advanced Optical Bonding (AOT)
- High Shock & Vibration Resistance
- PCT Multi-Touch Support
- IP65 Fascial Waterproof

**Application:**

- Marine
- Outdoor Display



**Specifications** Preliminary

|                              |                                                                                                        |
|------------------------------|--------------------------------------------------------------------------------------------------------|
| <b>Model Number</b>          | <b>NPS2118</b>                                                                                         |
| <b>LCD Display</b>           |                                                                                                        |
| <b>Backlight</b>             | 21.5" Wide TFT LCD, LED Backlight 1600 nits, FHD                                                       |
| <b>Active Display Area</b>   | 476.64 (H) x 268.11(V)                                                                                 |
| <b>Brightness</b>            | 1,600 cd/m <sup>2</sup>                                                                                |
| <b>Resolution</b>            | 1920 x 1080 (FHD)                                                                                      |
| <b>Contrast Ratio</b>        | 900 : 1                                                                                                |
| <b>Touch Screen</b>          | PCT Multi-Touch                                                                                        |
| <b>Optical</b>               | AOT                                                                                                    |
| <b>System</b>                |                                                                                                        |
| <b>Processor</b>             | Intel Core i5                                                                                          |
| <b>Chip Set</b>              | Intel H81 Express Chipset                                                                              |
| <b>Memory</b>                | DDR III SODIMM 4GB                                                                                     |
| <b>Ethernet</b>              | Realtek 8111F PCIe Gigabit LAN                                                                         |
| <b>Storage</b>               | SATA 2.5" HDD (Optional)                                                                               |
| <b>I/O Port</b>              | RJ45*2,USB-3*2,USB-2*4,COM*2,DVI*1,VGA*1, Audio Jack*2(Mic-in,Line-out),PS2*1(KB&Mouse),Power AC-in x1 |
| <b>BIOS</b>                  | AMI                                                                                                    |
| <b>Wake on LAN</b>           | Yes                                                                                                    |
| <b>Watchdog Timer</b>        | 1~255 steps programmable                                                                               |
| <b>H/W Status Monitor</b>    | Support power supply voltages, fan speed and temperature monitoring                                    |
| <b>Expansion Interface</b>   | Mini PCIe (internal)                                                                                   |
| <b>Power</b>                 |                                                                                                        |
| <b>Voltage</b>               | AC Input: AC 100 ~ 240V ; DC Input (Optional)                                                          |
| <b>Power consumption</b>     | TBD                                                                                                    |
| <b>Mechanical</b>            |                                                                                                        |
| <b>IP Rating</b>             | Fascial waterproof to IP65 standards when console mounted.                                             |
| <b>Construction</b>          | Aluminum Alloy Chassis                                                                                 |
| <b>Mounting</b>              | Panel (Flush) Mount , VESA75/VESA100, Stand Mount                                                      |
| <b>Dimension</b>             | 469.5mm (W) x 427.35mm(H) x 92.2mm(D)                                                                  |
| <b>Net Weight</b>            | TBD                                                                                                    |
| <b>Environmental</b>         |                                                                                                        |
| <b>Operating Temperature</b> | 0°C~50°C                                                                                               |
| <b>Storage Temperature</b>   | -20°C ~ 60°C                                                                                           |
| <b>Operating Humidity</b>    | 5~95% @ 40°C, non-condensing                                                                           |
| <b>Certification</b>         | Designed to meet CE/FCC                                                                                |

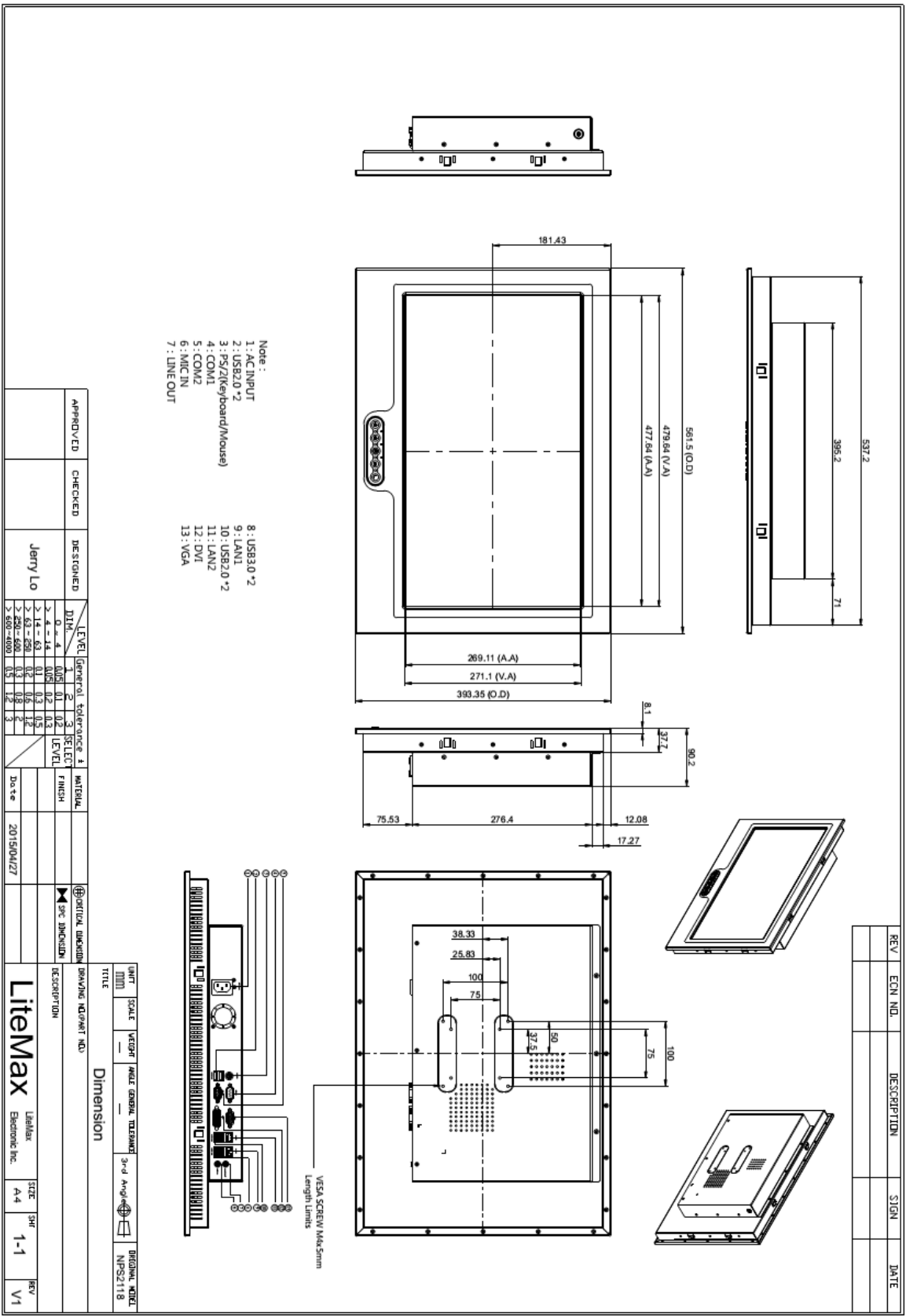
*Specifications are subject to change without notice.  
All brands or product names are trademarks or registered trademarks of their respective companies.*



# Mechanical Drawing

## Outline Dimensions

Unit : mm





### Ordering Information

| Part Number     | Description                                                                                                                                                                     |
|-----------------|---------------------------------------------------------------------------------------------------------------------------------------------------------------------------------|
| NPS2118-ETA-A01 | 21.5",1600Nits,PCT,Intel Core i5-4570TE,DDR3 SODIMM/4GB,SSD/64GB,RJ45*2,USB-3*2,USB-2*4,COM*2,DVI*1,VGA*1,Audio Jack*2(Mic-in,Line-out),PS2*1(KB&Mouse),AOT,WP,AC100~240V input |
|                 |                                                                                                                                                                                 |

### Optional Accessories

| Part Number  | Description                                                                                          |
|--------------|------------------------------------------------------------------------------------------------------|
| 321038156800 | Print,Label,Serial,NPS,1568.V0.Microsoft Windows 7.Professional for Embedded.<br>Systems,42C-00022,P |
| 810618301010 | CABLE.POWER.AC.1830mm USA type                                                                       |
| 810618301090 | CABLE.POWER.AC,1830mm Europe type                                                                    |
| 810618301050 | CABLE.POWER.AC.1830mm UK type                                                                        |
| 810618301170 | CABLE.POWER.AC,1830mm Australia type                                                                 |
| 810618301031 | CABLE.POWER.AC.1830mm Japan type                                                                     |