

NPS1935

19" IP65 Sunlight Readable Marine Panel PC

NPS1935 is a professional marine panel PC, combined the unique marine display and embedded system technology. With Intel high performance CPU, waterproof technology (IP65 certificated), advanced optical bonding technology (AOT), high brightness and special aluminum alloy casing design, NPS series offer computing solution for marine industrial.

Features:

- 1000 nits Sunlight Readable PC
- LED Backlight
- Advanced Optical Bonding (AOT)
- High Shock & Vibration Resistance
- Resistive Touch Support
- IP65 Facial Waterproof
- 9-36V DC Input (Optional)



Specifications

V1

Model Number	NPS1935
Description	19" IP65 Sunlight Readable Marine Panel PC
Backlight	LED Backlight
Active Display Area	376.32x301.06 mm
Brightness	1000 cd/m2
Resolution	1280x1024 (SXGA)
Contrast Ratio	1000:1
Touch Screen	5-Wire, Analog Resistive / AR Glass
Optical	AOT
System	
Processor	Intel Celeron M / Core 2 Duo 2.16GHz
Chip Set	Intel 945GM + ICH7M
Memory	DDR II DIMM up to 4GB
Ethernet	Intel 82573L 10/100/1000Base-TX RJ45x2
Storage	SATA 2.5" HDD
I/O Port	Audio Phone Jack (Line-in, Line-out, MIC-in) x 1, RJ45 x2, USB x4, COMx2 (RS232 x1, RS232 /422 /485 x1), DVI-I x1, VGA-out x 1, KB/MS PS2 x 1, Power AC-in x1
BIOS	Award
Wake on LAN	Yes
Watchdog Timer	Generates a time-out system reset
H/W Status Monitor	Support power supply voltages, fan speed and temperature monitoring
Expansion Interface	Mini PCI
Input Power	AC Input: AC 100 ~ 240V ; or DC9~36V Input (Optional)
Mechanical	
IP Rating	IP65 Facial waterproof.
Construction	Aluminum Alloy Chassis
Mounting	Panel (Flush) Mount , VESA75/VESA100, Stand Mount
Dimension	447mm (W) x 390.6mm(H) x 91.5mm(D)
Net Weight	7.2kg
Environmental	
Operating Temperature	-10°C~40°C
Storage Temperature	-20°C ~ 80°C
Operating Humidity	5~95% @ 40°C, non-condensing
Certification	CE/FCC

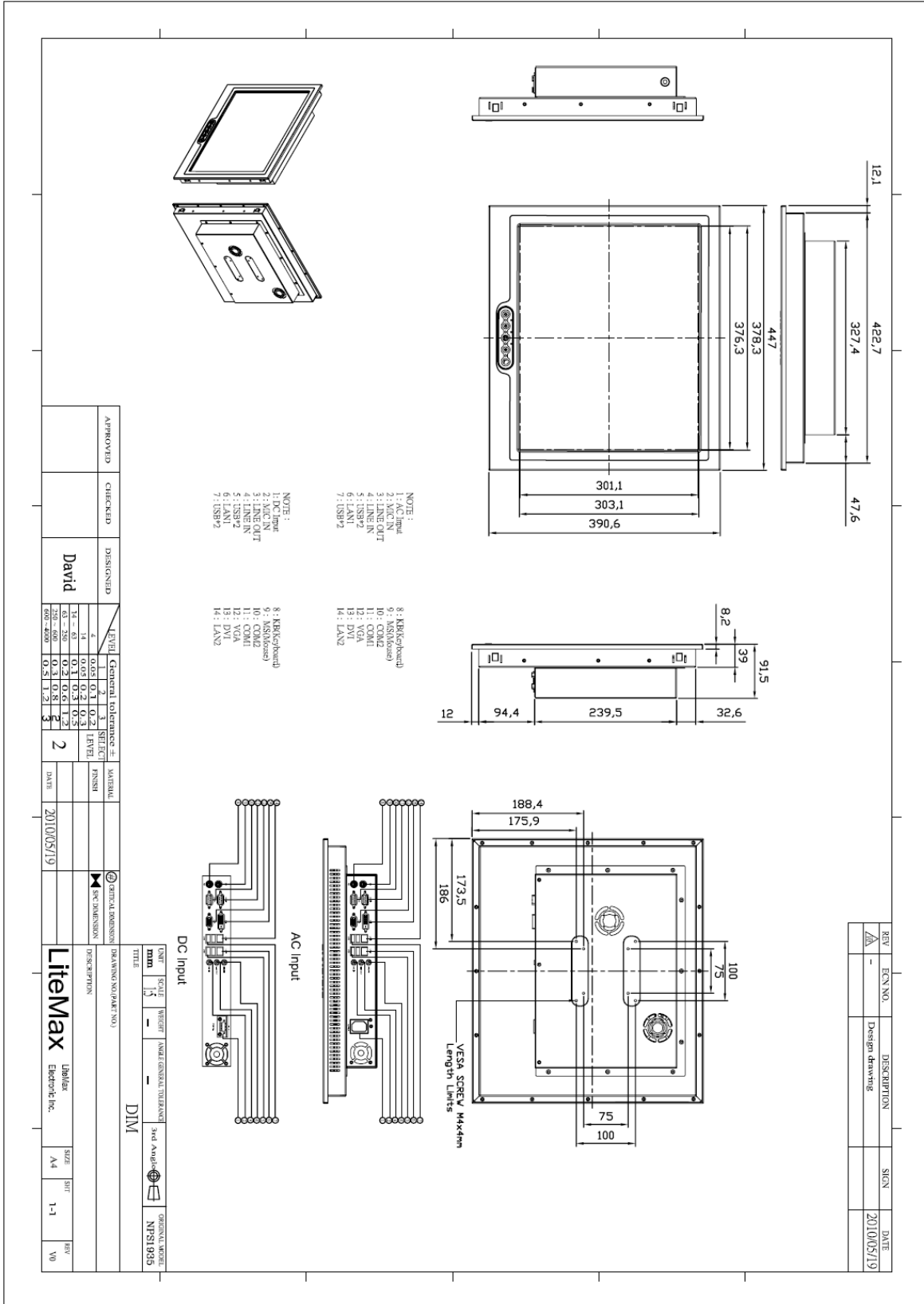


Specifications are subject to change without notice.
 All brands or product names are trademarks or registered trademarks of their respective companies.

Mechanical Drawing

Outline Dimensions

Unit:mm



APPROVED	CHECKED	DESIGNED	LEVEL	General tolerance	MATERIAL
		David	4	0,05 0,1 0,2 0,3 0,5 1 2	
			14	0,04 0,1 0,2 0,3 0,5 1 2	
			40	0,2 0,3 0,5 1 2	
			250-4000	0,3 0,5 1 2	
			3	0,5 1 2	
			2		
			DATE		
			2010/05/19		

UNIT	SCALE	WEIGHT	NAME (GENERAL USE ONLY)	3rd Angle	ORIGINAL MODEL
mm	1:1				NPS1935
TITLE					
DC Input					
AC Input					
DESCRIPTION					
Litemax					
Supplier					
Elmport Inc.					
SIZE					
A4					
SHEET					
1-1					
REV					
V0					

REV	ECN NO.	DESCRIPTION	SIGN	DATE
		Design drawing		2010/05/19



Ordering Information

Part Number	Description
NPS1935-ETAW-142-A01	19" LED B/L 1000nits.Touch Screen(Transparency:80%).Intel Celeron M 1.86GHz,DDR II.DIMM 1GB,RJ45*2,USB*4,COM*2.AC 100~240V,HDD/250GB,AOT,WP
NPS1935-ETAW-142-A02	19" LED B/L 1000nits , Touch.Screen(Transparency:80),Intel.Celeron M 1.86GHz,DDR II DIMM.1GB,RJ45*2,USB*4,COM*2.DC10~30V,HDD/250GB,AOT,WP
NPS1935-ETAW-363-A01	19"LED B/L 1000Nits.Touch Screen(Transparency:80%).Intel Core 2 Duo 2.16GHz,DDR II.DIMM 2GB,RJ45*2,USB*4,COM*2.AC 100~240V,HDD/250GB,AOT,WP
NPS1935-ETAW-363-A02	19",LED B/L 1000 Nits.Touch Screen(Transparency:80%).Intel Core 2 Duo 2.16GHz.DDR II DIMM 2GB,RJ45*2,USB*4.COM*2,DC10~30V,HDD/250GB,AOT.WP

Optional Accessories

Part Number	Description
980000480010	SET.OTHER,CD for AP.(NPS1535/1735/1935),all
980000430010	SET,other,CD for XPe O.S Image.(NPS1535/1735/1935),all
321038174501	Print,Label,Serial,LP,1745,V0.Microsoft OS/XP Embedded.968TXPEEMB
810618301010	CABLE.POWER.AC.1830mm USA type
810618301090	CABLE.POWER.AC,1830mm Europe type
810618301050	CABLE.POWER.AC.1830mm UK type
810618301170	CABLE.POWER.AC,1830mm Australia type
810618301030	CABLE.POWER.AC.1830mm Japan type