

## NPS1735

### 17" IP65 Sunlight Readable Marine Panel PC

NPS1735 is a professional marine panel PC, combined the unique marine display and embedded system technology. With Intel high performance CPU, waterproof technology (IP65 certificated), advanced optical bonding technology (AOT), high brightness and special aluminum alloy casing design, NPS series offer computing solution for marine industrial.

#### Features:

- 1000 nits Sunlight Readable PC
- LED Backlight
- Advanced Optical Bonding (AOT)
- High Shock & Vibration Resistance
- Resistive Touch Support
- IP65 Facial Waterproof
- 9-36V DC Input (Optional)



### Specifications

V1

<b>Model Number</b>	<b>NPS1735</b>
<b>Description</b>	17" IP65 Sunlight Readable Marine Panel PC
<b>Backlight</b>	LED Backlight
<b>Active Display Area</b>	337.92x270.336 mm
<b>Brightness</b>	1000 cd/m2
<b>Resolution</b>	1280x1024 (SXGA)
<b>Contrast Ratio</b>	1000:1
<b>Touch Screen</b>	5-Wire, Analog Resistive / AR Glass
<b>Optical</b>	AOT
<b>System</b>	
<b>Processor</b>	Intel Celeron M / Core 2 Duo 2.16GHz
<b>Chip Set</b>	Intel 945GM + ICH7M
<b>Memory</b>	DDR II DIMM up to 4GB
<b>Ethernet</b>	Intel 82573L 10/100/1000Base-TX RJ45x2
<b>Storage</b>	SATA 2.5" HDD
<b>I/O Port</b>	Audio Phone Jack (Line-in, Line-out, MIC-in) x 1, RJ45 x2, USB x4, COMx2 (RS232 x1, RS232 /422 /485 x1), DVI-I x1, VGA-out x 1, KB/MS PS2 x 1, Power AC-in x1
<b>BIOS</b>	Award
<b>Wake on LAN</b>	Yes
<b>Watchdog Timer</b>	Generates a time-out system reset
<b>H/W Status Monitor</b>	Support power supply voltages, fan speed and temperature monitoring
<b>Expansion Interface</b>	Mini PCI
<b>Input Power</b>	AC Input: AC 100 ~ 240V ; or DC9~36V Input (Optional)
<b>Mechanical</b>	
<b>IP Rating</b>	IP65 Facial waterproof.
<b>Construction</b>	Aluminum Alloy Chassis
<b>Mounting</b>	Panel (Flush) Mount , VESA75/VESA100, Stand Mount
<b>Dimension</b>	409.5mm (W) x 363.1mm(H) x 91.3mm(D)
<b>Net Weight</b>	6.3kg
<b>Environmental</b>	
<b>Operating Temperature</b>	-10°C~40°C
<b>Storage Temperature</b>	-20°C ~ 80°C
<b>Operating Humidity</b>	5~95% @ 40°C, non-condensing
<b>Certification</b>	CE/FCC

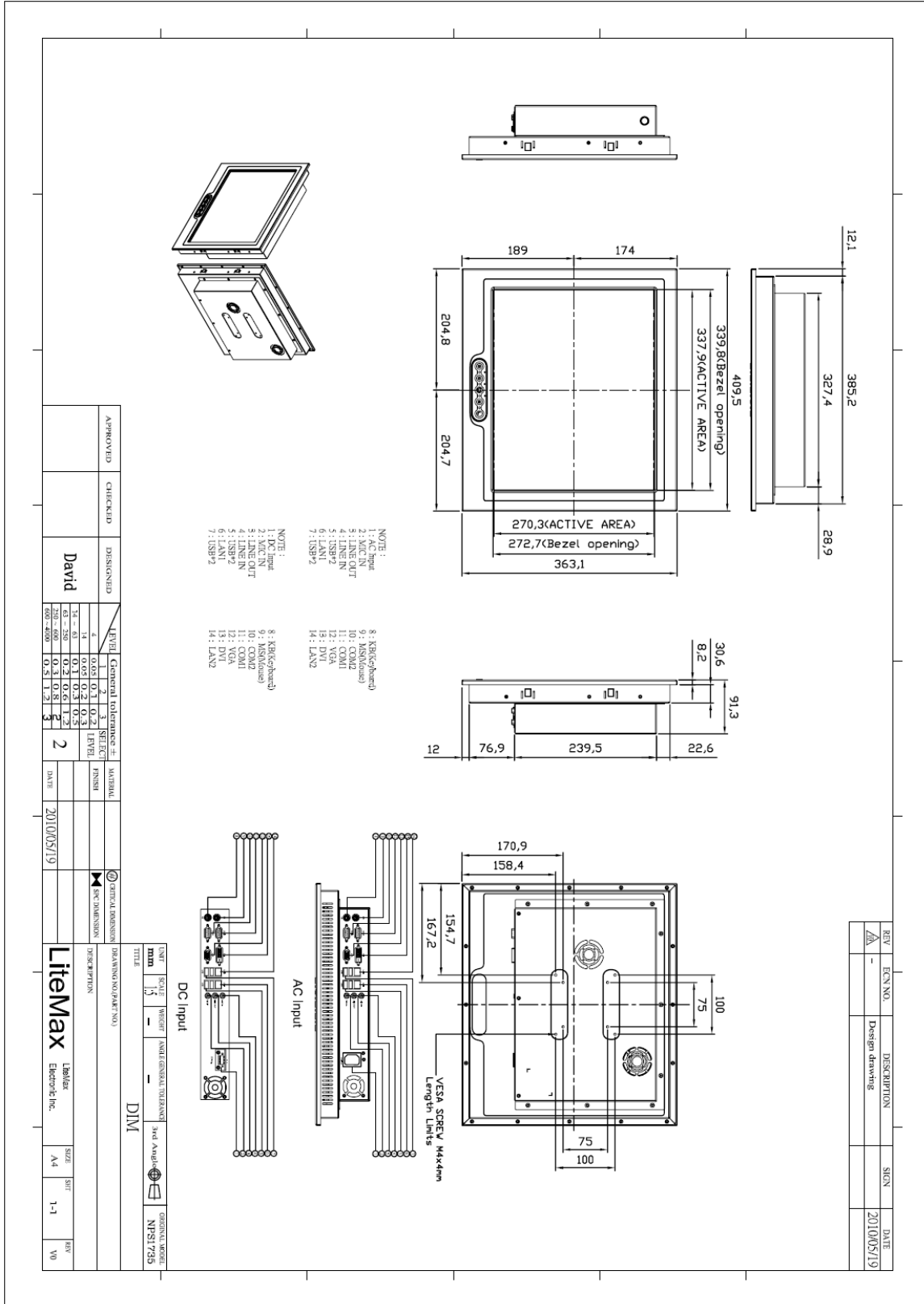


Specifications are subject to change without notice.  
 All brands or product names are trademarks or registered trademarks of their respective companies.

# Mechanical Drawing

## Outline Dimensions

Unit:mm





### Ordering Information

Part Number	Description
NPS1735-ETAW-142-A01	17"LED B/L 1000nits.Touch Screen(Transparency:80%).Intel Celeron M 1.86GHz,DDR II.DIMM 1GB,RJ45*2,USB*4,COM*2.AC 100~240V,HDD/250GB,AOT,WP
NPS1735-ETAW-142-A02	17" LED B/L 1000nits.Touch Screen(Transparency:80%).Intel Celeron M 1.86GHz,DDR II.DIMM 1GB,RJ45*2,USB*4,COM*2.DC10~30V,HDD/250GB,AOT,WP
NPS1735-ETAW-363-A01	17"LED B/L 1000 Nits,Touch.Screen(Transparency:80%).Intel Core 2 Duo 2.16GHz.DDR II DIMM 2GB,RJ45*2,USB*4.COM*2,AC 100~240V,HDD/250GB.AOT,WP
NPS1735-ETAW-363-A02	17"LED B/L 1000 Nits,Touch.Screen(Trensparency:80%).Intel Core 2 Duo 2.16GHz.DDR II DIMM 2GB,RJ45*2,USB*4.COM*2,DC10~30V,HDD/250GB.AOT,WP

### Optional Accessories

Part Number	Description
980000480010	SET.OTHER,CD for AP.(NPS1535/1735/1935),all
980000430010	SET,other,CD for XPe O.S Image.(NPS1535/1735/1935),all
321038174501	Print,Label,Serial,LP,1745,V0.Microsoft OS/XP Embedded.968TXPEEMB
810618301010	CABLE.POWER.AC.1830mm USA type
810618301090	CABLE.POWER.AC,1830mm Europe type
810618301050	CABLE.POWER.AC.1830mm UK type
810618301170	CABLE.POWER.AC,1830mm Australia type
810618301030	CABLE.POWER.AC.1830mm Japan type