



NPD2425 24" FHD IP65 Sunlight Readable Marine Display

NAVPIXEL NPD2425, the high-performance, rugged touch monitor, is specially engineered to survive from the most demanding working environment. Housed in a milled billet aluminum case, the slim-profile NAVPIXEL NPD2425 is light weight and watertight. The front-mounted sunlight readable touch screen makes the industrial rugged monitor vividly and user-friendly. In addition, the high power efficiency and low heat design guarantee the stability and longevity required for mission critical deployment.

Features:

- 1000 nits Sunlight Readable LCD
- Long Life, Low Power Consumption LED Backlight
- Wide Operating Temperature
- Picture In Picture Function
- Advanced Optical Bonding (AOT)
- High Shock & Vibration Resistance
- Resistive Touch Support
- IP65 Facial Waterproof
- 9-36V DC Input

Application:

- Marine



Specifications

V1

Model Number	NPD2425
Description	24" FHD IP65 Sunlight Readable Marine Display
Backlight	LED Backlight
Active Display Area	531.36 x 298.89mm
Brightness	1000 cd/m ²
Resolution	1920x1080 (FHD)
Contrast Ratio	3000:1
Pixel Pitch (mm)	0.276(H) x 0.276 (V)
Viewing Angle	178 (H), 178(V)
Display Color	16.7M
Response Time	25ms
Inputs	VGAx2, DVIx2, Compositex3, RS232x1, USBx1
PIP Support	3 Stages (child, split & wide screen)
Mechanical	
IP Rating	Facial waterproof to IP65 standards when console mounted.
Construction	Rugged Aluminum Alloy Chassis
Mounting	Panel (Flush) mount, VESA mount
Dimension (mm)	584.2(W)x374.8(H)x57.7(D)
Net Weight	7.8kg
Power	
Voltage	DC Input Voltage: DC 9~36V
Power Consumption	50W
Environmental	
Operating Temperature	-10°C~50°C
Non-Operating Temperature	-20°C~70°C
Certification	CE / FCC
Marine Type Approval	BV Rule IACES-E10 certification, comply with IEC 60945

Specifications are subject to change without notice.

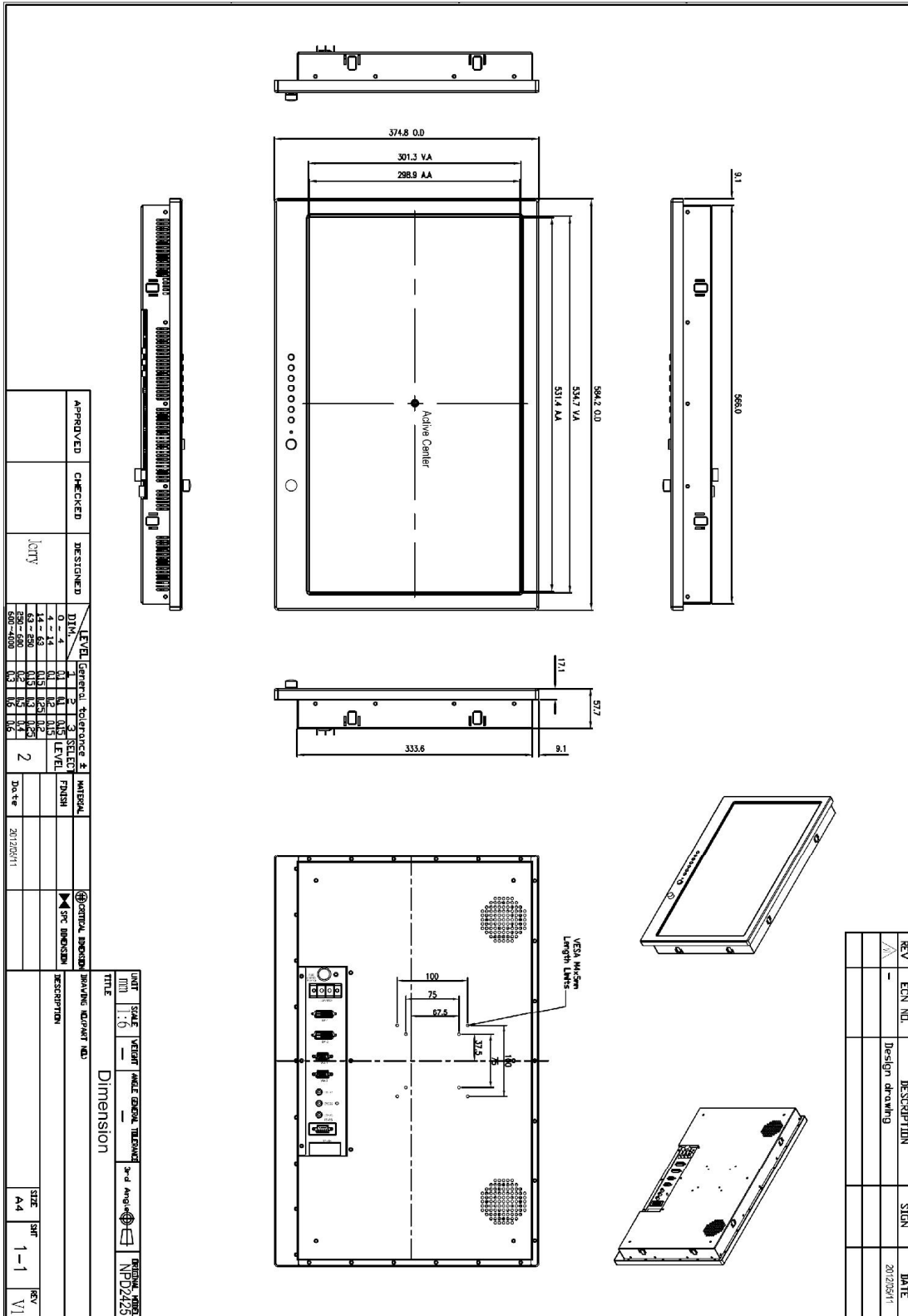
All brands or product names are trademarks or registered trademarks of their respective companies.



Mechanical Drawing

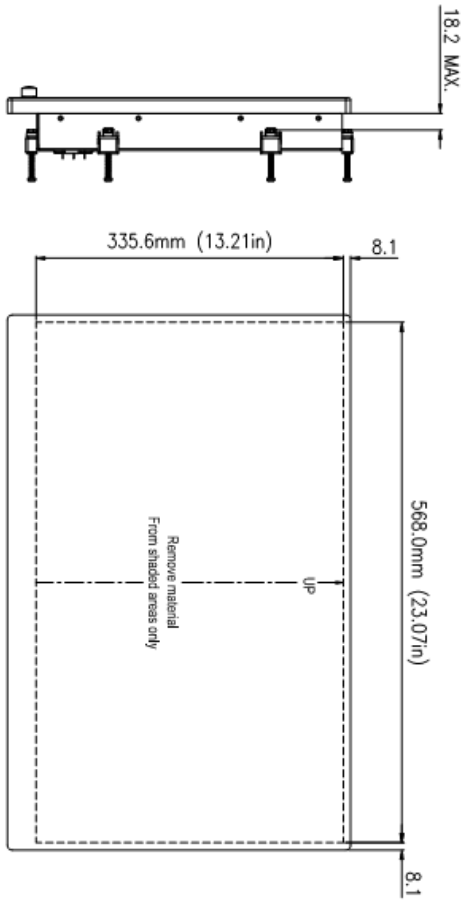
Outline Dimensions

Unit:mm





REV	ECN NO	DESCRIPTION	SIGN	DATE



APPROVED	CHECKED	DESIGNED	Jerry
		DATE	

LEVEL	General tolerance ±	SELECT	MATERIAL	ORITICAL DIMENSION
0 - 4	0.1	1		
14 - 63	0.15	2		
63 - 250	0.2	3		
250 - 630	0.3	4		
630 - 1000	0.5	5		

UNIT	SCALE	VECTOR	ANGLE GENERAL TOLERANCE	3rd Angle	GENERAL NOTES
MM	1:1				NSD2425

TITLE	DRIVING INQUIRY NO
Dimension	
DESCRIPTION	
LITEMAX Lithiox Electronic Inc	
SIZE A4	
SHEET 1-1	
REV V1	



Ordering Information

Part Number	Description
NPD2425-EGAW-H01	24", 1000nits, FHD, AR Glass, LID24, AD8668, WP, VR, AOT, V01
NPD2425-EGAW-H011	24", 1000nits, FHD, AR Glass, LID24, AD8668, WP, VR, AOT, with adaptor, V01
NPD2425-ETAW-H01	24", 1000nits, FHD, T/OT-5w-res-usb. (Transparency:80%), LID24, AD8668, WP, VR, AOT, V01
NPD2425-ETAW-H011	24", 1000nits, FHD, T/OT-5w-res-usb. (Transparency:80%), LID24, AD8668, WP, VR, AOT, with adaptor, V01

Optional Accessories

Part Number	Description
810650005110	CABLE, POWER, DC, 5000mm, TER. MINAL TO OPEN, 14AWG*2C+BRA.ID, COOL GRAY 7C PVC JACKET, P
810130001000	CABLE. VGA. 3000mm. D-SUB15P MALE. BLUE TO D-SUB 15P MALE BLUE. BLACK. P
321189155501	Print, Menu, User, NPD. 1555, V0, series, P
112615315401 x (4)	Metal, SPCC, NPS, 1531, Lock, V0, P
214032121101 x (4)	Screw, M4, 32mm, Round, Ni, P
460100002101 x (4)	Fixture, other, MP-4, V0, P
980000560010 (Optional)	SET, OTHER, ADAPTER REWORK. 60W KPA-060F WITH Y TYPE. TERMINAL, P
810618301010 (Optional)	CABLE. POWER. AC. 1830mm USA type
810618301090 (Optional)	CABLE, POWER, AC, 1830mm Europe type
810618301050 (Optional)	CABLE. POWER. AC. 1830mm UK type
810618301170 (Optional)	CABLE. POWER, AC, 1830mm Australia type
810618301030 (Optional)	CABLE. POWER. AC. 1830mm Japan type