



## SLO 1568

### 15" Open Frame LCD Display, LED Backlight 1600nits,XGA

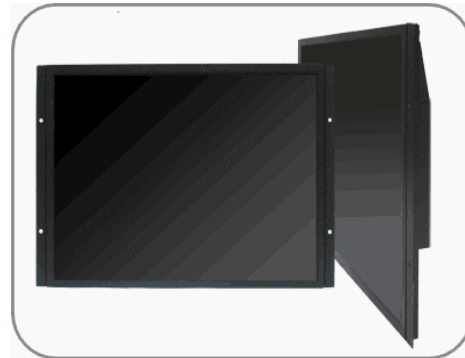
SLO 1568 open frame LCD display, built-in 1600 nits high brightness for sunlight readable application. Features wide operating temperature, high brightness, AOT optical bonding, touch screen capable, and customized mechanical design; fulfill the demand for extreme environments. It offers the best visibility, performance and cost effective value. The high level of brightness together with fast response time and LED backlight technology, the monitor brings remarkable display quality. And guaranteeing product life cycle longevity, stability, and reliability. Perfectly suitable for kiosk, ATM, POS, marine, military, medical, transportation, and outdoor industrial application.

#### Key Features

- Sunlight Readable
- LED Backlight
- High Shock & Vibration Resistance
- Low Power Consumption
- Wide Temperature. Range (-20°C~60°C)
- High Uniformity (90%)
- Low EMI Noise
- Wide Dimming
- Life Expectancy (70,000hrs)

#### Applications

Marine, Military,  
Medical, Transportation  
Industrial



### Specifications

V1

<b>Model No.</b>	<b>SLO1568</b>
<b>Description</b>	15" Open Frame LCD Display, LED Backlight 1600 nits, XGA
<b>Display Area (mm)</b>	304.128 x 228.096 mm
<b>Brightness</b>	1600 cd/m <sup>2</sup>
<b>Resolution</b>	1024x768 (XGA)
<b>Contrast Ratio</b>	700 : 1
<b>Pixel Pitch (mm)</b>	0.297(H) x 0.297(V)
<b>Viewing Angle</b>	+80°~-80°(H), +80°~-80°(V)
<b>Display Colors</b>	16.7M
<b>Response Time (Typical)</b>	8ms
<b>Power Input</b>	DC-12V
<b>Power Consumption</b>	23W
<b>Dimensions (mm)</b>	350.5x253.5x31
<b>Weight (Net)</b>	1.5Kg
<b>Control Board (Optional)</b>	<input checked="" type="checkbox"/> AD5621GA <input type="checkbox"/> AD5621GD <input type="checkbox"/> AD5766GDVA <input type="checkbox"/> AD2662GDVAR
<input checked="" type="checkbox"/> AD5621GA	VGA+Audio
<input type="checkbox"/> AD5621GD	VGA+DVI
<input type="checkbox"/> AD5766GDVA	VGA+CVBS+S-Video+Audio (Optional DVI / Component)
<input type="checkbox"/> AD2662GDVAR	VGA+DVI (Optional S-Video/ Component / Audio)
<b>F / R Control Button</b>	<input type="checkbox"/> 5 Key <input type="checkbox"/> 4 Key
<input type="checkbox"/> 5 Key	Power Switch, Menu, Select (+,-), Auto
<input type="checkbox"/> 4 Key	Power Switch, Menu, Select (+,-),
<b>OSD Menu</b>	Brightness, Contrast, H/V Position, Color, Phase, Clock...
<b>Optional</b>	<input type="checkbox"/> AOT <input type="checkbox"/> Touch Screen <input type="checkbox"/> Waterproof

Specifications are subject to change without notice.

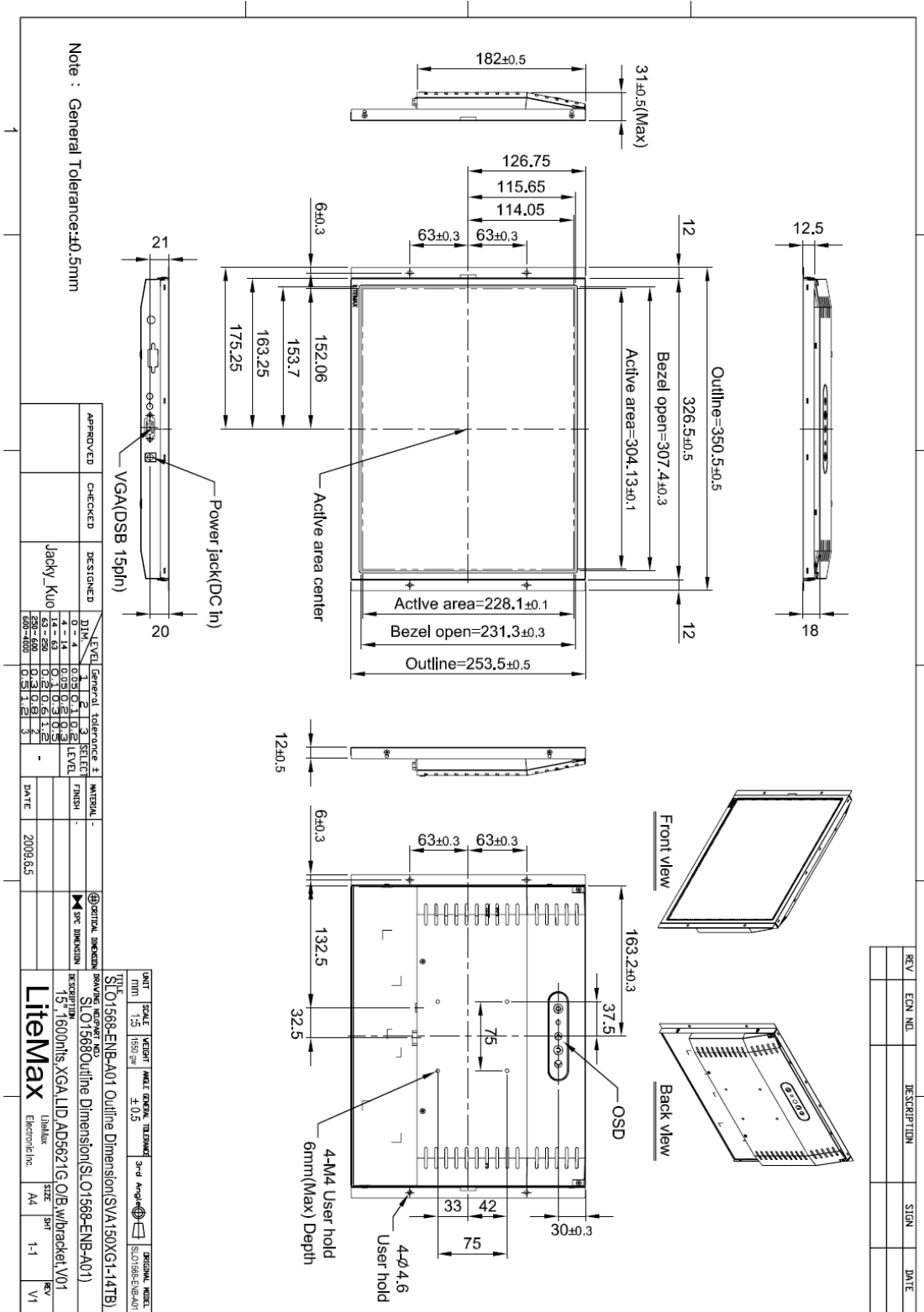
All brands or product names are trademarks or registered trademarks of their respective companies.



## Mechanical Drawing

### Outline Dimensions

Unit:mm





### Ordering Information

Part Number	Description
SLO1568-ENB-A01	15",1600nits,XGA,LID,AD5621G.O/B,w/bracket,V01
SLO1568-ENB-A01-01	15",1600nits,XGA,LID,AD5621G.O/B,w/bracket,3-in-1 carton.V01
SLO1568-ETB-A01	15",1600nits,XGA,LID,AD5621G.T/HT-res-5w-usb.(Transparency:80%),O/B.w/bracket,1-in-1 carton,V01
SLO1568-ETB-A02	15",1600nits,XGA,LID,AD5621G.T/HT-res-5w-usb.(Transparency:80%),O/B.w/bracket,3-in-1 carton,V01
SLO1568-ETB-A03	15",1600nits,XGA.T/DN-cap-usb-7.4mm.(Transparency:90%),LID15A03.AD5621G,O/B,V01

### Optional Accessories

Part Number	Description
840612031100	ADAPTER.12V.3.33A.40W,PAA040F,P
810618301010	CABLE.POWER.AC.1830mm USA type
810618301090	CABLE,POWER,AC,1830mm Europe type
810618301050	CABLE.POWER.AC.1830mm UK type
810618301170	CABLE.POWER,AC,1830mm Australia type
810618301030	CABLE.POWER.AC.1830mm Japan type